

\$213,999 - 301, 636 Meredith Road Ne, Calgary

MLS® #A2243726

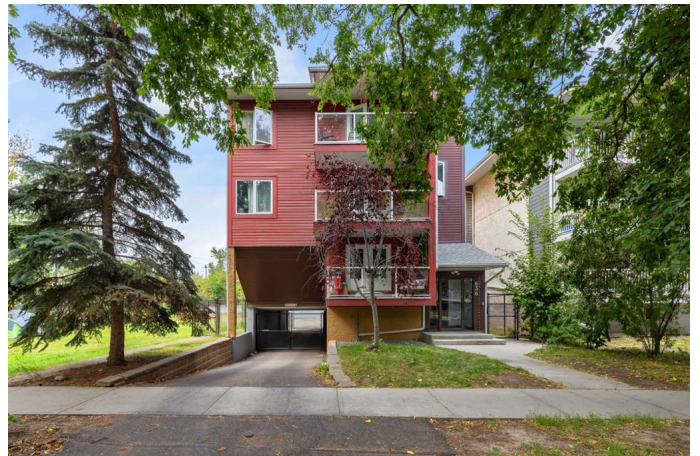
\$213,999

2 Bedroom, 1.00 Bathroom, 757 sqft

Residential on 0.00 Acres

Bridgeland/Riverside, Calgary, Alberta

Location, Location! This top-floor 2-bedroom condo is nestled in the heart of Bridgeland, one of Calgary's most sought-after communities—just minutes from downtown, the river, scenic walking and bike paths, schools, public transit, and every amenity you could need. Inside, you'll find a spacious, open-concept living and dining area with large patio doors that lead to a private balcony offering city skyline views. The kitchen provides plenty of cabinet and counter space, perfect for everyday living and entertaining. The unit features two generously sized bedrooms, a full 4-piece bathroom, and a laundry/storage room with hookups, plus access to a free common laundry area. Additional highlights include gated private parking with one assigned stall, plus off-street parking. The building is clean, well-maintained, and located in a fantastic walkable neighborhood. Don't miss this opportunity to own in one of Calgary's most vibrant and connected communities!



Built in 1979

Essential Information

MLS® # A2243726

Price \$213,999

Bedrooms	2
Bathrooms	1.00
Full Baths	1
Square Footage	757
Acres	0.00
Year Built	1979
Type	Residential
Sub-Type	Apartment
Style	Single Level Unit
Status	Active

Community Information

Address	301, 636 Meredith Road Ne
Subdivision	Bridgeland/Riverside
City	Calgary
County	Calgary
Province	Alberta
Postal Code	T3E 5A8

Amenities

Amenities	Laundry, Parking, Secured Parking, Visitor Parking
Parking Spaces	1
Parking	Additional Parking, Electric Gate, Stall

Interior

Interior Features	See Remarks
Appliances	Dishwasher, Electric Stove, Range Hood, Refrigerator
Heating	Baseboard, Natural Gas
Cooling	None
# of Stories	3

Exterior

Exterior Features	Balcony
Roof	Tar/Gravel
Construction	Stucco, Vinyl Siding, Wood Frame
Foundation	Poured Concrete

Additional Information

Date Listed	July 28th, 2025
-------------	-----------------

Days on Market	1
Zoning	MU-1 f4.5h22

Listing Details

Listing Office	RE/MAX Real Estate (Mountain View)
----------------	------------------------------------

Data is supplied by Pillar 9â„¢ MLS® System. Pillar 9â„¢ is the owner of the copyright in its MLS® System. Data is deemed reliable but is not guaranteed accurate by Pillar 9â„¢. The trademarks MLS®, Multiple Listing Service® and the associated logos are owned by The Canadian Real Estate Association (CREA) and identify the quality of services provided by real estate professionals who are members of CREA. Used under license.