

\$2,599,900 - 1131 Lansdowne Avenue Sw, Calgary

MLS® #A2231995

\$2,599,900

4 Bedroom, 4.00 Bathroom, 3,057 sqft

Residential on 0.14 Acres

Elbow Park, Calgary, Alberta

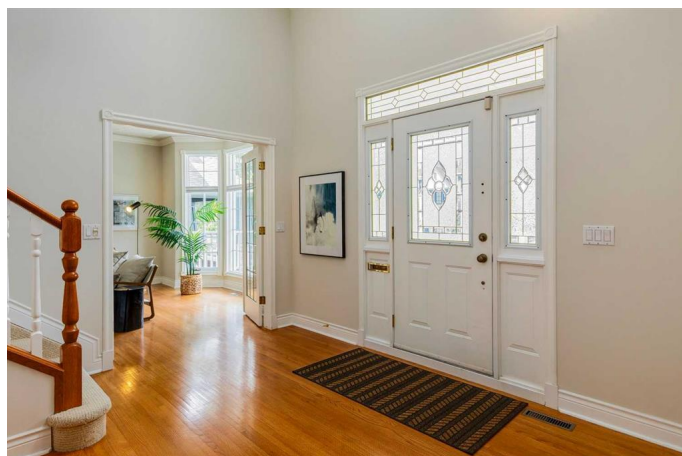
Open house cancelled. Home is conditionally sold. Backing the Britannia Ridge with a beautiful private lot in desirable Riverdale/Lansdowne neighborhood. This 2 story 4 bedroom home offers a fabulous layout for family life + entertaining. The curb appeal with front veranda is a welcoming approach to the home. Enter to a two story entrance with loads of light, 9 foot ceilings, hardwood flooring + neutral decor. Immediately off the entrance is a main floor office/flex room. The living room (with gas fireplace) + dining rooms are the perfect size for gatherings. Very spacious kitchen with loads of cabinetry + counter space as well as pantry + roomy breakfast nook which overlooks the beautiful backyard. The family room is off the kitchen + offers a wood burning fireplace with dumb waiter to the garage for the firewood storage. Four large bedrooms upstairs as well as a laundry room; the primary bedroom is very large with sitting area, 4 piece ensuite bath + walk in closet + a lovely view. The lower level is developed with a family room, full bath, huge storage room + 4 car tandem garage. Steps to Sandy Beach, the river + pathway system + walking distance to excellent schools, the shops of Britannia, Parks + Glencoe.

Built in 1993

Essential Information

MLS® #

A2231995



| | |
|----------------|-------------|
| Price | \$2,599,900 |
| Bedrooms | 4 |
| Bathrooms | 4.00 |
| Full Baths | 4 |
| Square Footage | 3,057 |
| Acres | 0.14 |
| Year Built | 1993 |
| Type | Residential |
| Sub-Type | Detached |
| Style | 2 Storey |
| Status | Active |

Community Information

| | |
|-------------|--------------------------|
| Address | 1131 Lansdowne Avenue Sw |
| Subdivision | Elbow Park |
| City | Calgary |
| County | Calgary |
| Province | Alberta |
| Postal Code | T2S 1A4 |

Amenities

| | |
|----------------|-----------------------|
| Parking Spaces | 4 |
| Parking | Quad or More Attached |

Interior

| | |
|-------------------|--|
| Interior Features | Bookcases, Breakfast Bar, Built-in Features, Granite Counters, High Ceilings, Kitchen Island, Pantry, Vaulted Ceiling(s) |
| Appliances | Dishwasher, Double Oven, Dryer, Garage Control(s), Gas Cooktop, Refrigerator, Washer, Window Coverings |
| Heating | Forced Air, Natural Gas |
| Cooling | None |
| Fireplace | Yes |
| # of Fireplaces | 2 |
| Fireplaces | Gas, Mantle, Wood Burning, Raised Hearth, Stone |
| Has Basement | Yes |
| Basement | Finished, Full |

Exterior

| | |
|-------------------|-------------------------|
| Exterior Features | Awning(s), Private Yard |
|-------------------|-------------------------|

| | |
|-----------------|---|
| Lot Description | Back Yard, Backs on to Park/Green Space, No Neighbours Behind, Private, Rectangular Lot |
| Roof | Wood |
| Construction | Vinyl Siding, Wood Frame |
| Foundation | Poured Concrete |

Additional Information

| | |
|----------------|-----------------|
| Date Listed | June 19th, 2025 |
| Days on Market | 5 |
| Zoning | R-CG |

Listing Details

| | |
|----------------|--------------------------------|
| Listing Office | Real Estate Professionals Inc. |
|----------------|--------------------------------|

Data is supplied by Pillar 9â„¢ MLS® System. Pillar 9â„¢ is the owner of the copyright in its MLS® System. Data is deemed reliable but is not guaranteed accurate by Pillar 9â„¢. The trademarks MLS®, Multiple Listing Service® and the associated logos are owned by The Canadian Real Estate Association (CREA) and identify the quality of services provided by real estate professionals who are members of CREA. Used under license.