

\$739,900 - 228 Aspenmere Way, Chestermere

MLS® #A2225679

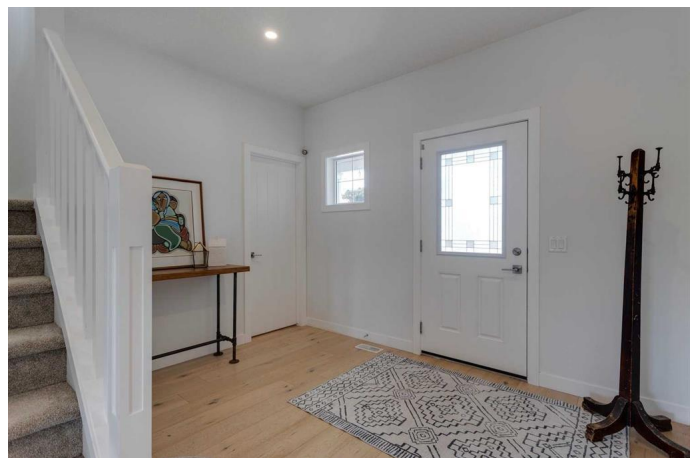
\$739,900

3 Bedroom, 4.00 Bathroom, 2,236 sqft

Residential on 0.14 Acres

Westmere, Chestermere, Alberta

MOVE-IN READY! Nestled on a quiet street and situated on a pie-shaped lot, this turnkey home features a sunny west-facing backyard with no rear neighbours—perfect for soaking up evening sunsets! Stay cool all summer with central A/C. Designed with functionality in mind, the open-concept main floor offers a spacious living room with a cozy gas fireplace, a stylish kitchen with quartz countertops, a breakfast bar, stainless steel appliances including a gas range, and a handy walk-through pantry. The adjoining dining nook easily accommodates a large table, ideal for family gatherings. Also on this level is a 2-piece powder room and access to the attached double garage through an oversized mudroom—a dream feature for families with young children. Upstairs, you'll find a versatile bonus room, a well-appointed main bathroom, laundry room, and three generously sized bedrooms. The vaulted primary bedroom includes a walk-in closet with convenient access directly to the laundry room, and a luxurious ensuite with dual sinks, a deep soaker tub, and a large standalone shower. The lower level includes a fully finished 4-piece bathroom and offers a smart layout for future development. With three large windows, the basement can be configured in multiple ways—ideal for adding extra bedrooms, a rec room, a future bar or kitchenette with the plumbing already roughed in. Enjoy the oversized west-facing backyard with plenty of room to play, entertain, or relax in your private



outdoor oasis. Located in a fantastic community with quick access in and out, walking distance to popular Cove Beach, parks, playgrounds, off-leash park and walking/biking trails. Call your favorite Realtor today to book your private viewing!

Built in 2017

Essential Information

MLS® #	A2225679
Price	\$739,900
Bedrooms	3
Bathrooms	4.00
Full Baths	3
Half Baths	1
Square Footage	2,236
Acres	0.14
Year Built	2017
Type	Residential
Sub-Type	Detached
Style	2 Storey
Status	Active

Community Information

Address	228 Aspenmere Way
Subdivision	Westmere
City	Chestermere
County	Chestermere
Province	Alberta
Postal Code	T1X 0Y2

Amenities

Parking Spaces	4
Parking	Double Garage Attached
# of Garages	2

Interior

Interior Features	Double Vanity, Kitchen Island, No Smoking Home, Quartz Counters, See
-------------------	--

	Remarks
Appliances	Central Air Conditioner, Dishwasher, Dryer, Garage Control(s), Microwave, Refrigerator, Stove(s), Washer, Window Coverings
Heating	Forced Air
Cooling	Central Air
Fireplace	Yes
# of Fireplaces	1
Fireplaces	Gas
Has Basement	Yes
Basement	Full, Partially Finished, Unfinished

Exterior

Exterior Features	Private Yard
Lot Description	Pie Shaped Lot, Private
Roof	Asphalt Shingle
Construction	Vinyl Siding, Wood Frame
Foundation	Poured Concrete

Additional Information

Date Listed	May 29th, 2025
Days on Market	9
Zoning	R1

Listing Details

Listing Office	The Home Hunters Real Estate Group Ltd.
----------------	---

Data is supplied by Pillar 9â„¢ MLS® System. Pillar 9â„¢ is the owner of the copyright in its MLS® System. Data is deemed reliable but is not guaranteed accurate by Pillar 9â„¢. The trademarks MLS®, Multiple Listing Service® and the associated logos are owned by The Canadian Real Estate Association (CREA) and identify the quality of services provided by real estate professionals who are members of CREA. Used under license.