

\$249,900 - 9006 86 Avenue, Grande Prairie

MLS® #A2222103

\$249,900

3 Bedroom, 2.00 Bathroom, 1,216 sqft
Residential on 0.10 Acres

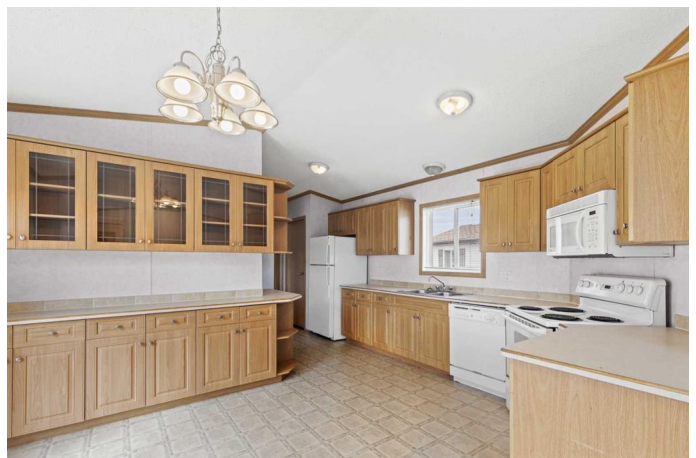
MH - Creekside, Grande Prairie, Alberta

Why rent? Great location. This very well cared for home offers three bedrooms two full bathrooms, large kitchen with an abundance of cabinets, built in china cabinet and an open concept living dining area with vaulted ceilings. Master bedroom offers walk-in closet and ensuite bathroom with jetted tub. Large deck off kitchen dining area to enjoy the yard. This lot faces a green area and has paved front parking as well as rear alley parking pad and storage shed. Close to school, Tim Hortons, Freshco and other shopping. Possession can be quick. Condo fees are \$175.00 per month which include water, sewer, garbage, and snow removal. Get in now before prices go up further. Seller is a licensed Realtor in province of Alberta.

Built in 2006

Essential Information

| | |
|----------------|-------------|
| MLS® # | A2222103 |
| Price | \$249,900 |
| Bedrooms | 3 |
| Bathrooms | 2.00 |
| Full Baths | 2 |
| Square Footage | 1,216 |
| Acres | 0.10 |
| Year Built | 2006 |
| Type | Residential |
| Sub-Type | Detached |



| | |
|--------|----------|
| Style | Bungalow |
| Status | Active |

Community Information

| | |
|-------------|----------------|
| Address | 9006 86 Avenue |
| Subdivision | MH - Creekside |
| City | Grande Prairie |
| County | Grande Prairie |
| Province | Alberta |
| Postal Code | T8X 0A8 |

Amenities

| | |
|----------------|--------------------------------------------------------------------------------|
| Amenities | Park, Playground |
| Utilities | Electricity Connected, Natural Gas Connected, Sewer Connected, Water Connected |
| Parking Spaces | 3 |
| Parking | Alley Access, Driveway, Parking Pad |

Interior

| | |
|-------------------|--------------------------------|
| Interior Features | Jetted Tub, Vaulted Ceiling(s) |
| Appliances | See Remarks |
| Heating | Forced Air, Natural Gas |
| Cooling | None |
| Basement | None |

Exterior

| | |
|-------------------|--------------------------|
| Exterior Features | Other |
| Lot Description | Level |
| Roof | Asphalt Shingle |
| Construction | Vinyl Siding, Wood Frame |
| Foundation | Piling(s) |

Additional Information

| | |
|----------------|----------------|
| Date Listed | May 21st, 2025 |
| Days on Market | 12 |
| Zoning | MHC |

Listing Details

| | |
|----------------|---------------------------------|
| Listing Office | Royal LePage - The Realty Group |
|----------------|---------------------------------|

Data is supplied by Pillar 9â„¢ MLS® System. Pillar 9â„¢ is the owner of the copyright in its MLS® System. Data is deemed reliable but is not guaranteed accurate by Pillar 9â„¢. The trademarks MLS®, Multiple Listing Service® and the associated logos are owned by The Canadian Real Estate Association (CREA) and identify the quality of services provided by real estate professionals who are members of CREA. Used under license.