

\$84,900 - #21, 6012 Willow Drive E, Boyle

MLS® #A2220162

\$84,900

3 Bedroom, 2.00 Bathroom, 1,181 sqft

Mobile on 0.00 Acres

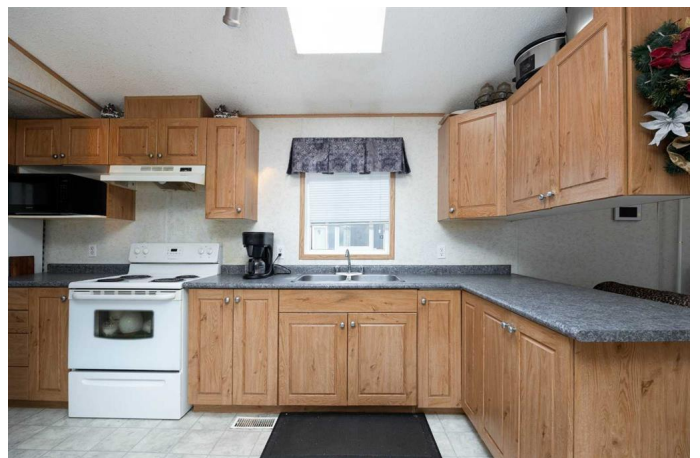
Boyle, Boyle, Alberta

Welcome to this 2006 mobile unit on rented land (\$375 per month) affordable living or a rental property. This home features a spacious kitchen , living room boasts a cathedral ceiling, 3 bedrooms , 2 bathrooms. Master has its own walk in closet and 4 pc ensuite, separate laundry room with easy access to a large deck. This property is located close to amenities, schools, plus the many lakes surrounding the Boyle area and golf courses only 10 - 15 min away.. Only 1.5 hrs form Edmonton and 2.5 hrs from Fort McMurray. Don't miss out on this amazing priced home-call TODAY and start packing! This mobile can also be moved off the LOT.

Built in 2006

Essential Information

MLS® #	A2220162
Price	\$84,900
Bedrooms	3
Bathrooms	2.00
Full Baths	2
Square Footage	1,181
Acres	0.00
Year Built	2006
Type	Mobile
Sub-Type	Mobile
Style	Single Wide Mobile Home
Status	Active



Community Information

Address	#21, 6012 Willow Drive E
Subdivision	Boyle
City	Boyle
County	Athabasca County
Province	Alberta
Postal Code	T0A 0M0

Amenities

Parking Spaces	2
Parking	Off Street, Parking Pad

Interior

Appliances	Electric Stove, Refrigerator, Washer/Dryer
Heating	Forced Air, Natural Gas

Exterior

Roof	Asphalt Shingle
------	-----------------

Additional Information

Date Listed	May 13th, 2025
Days on Market	6

Listing Details

Listing Office	RE/MAX Connect
----------------	----------------

Data is supplied by Pillar 9â„¢ MLSÂ® System. Pillar 9â„¢ is the owner of the copyright in its MLSÂ® System. Data is deemed reliable but is not guaranteed accurate by Pillar 9â„¢. The trademarks MLSÂ®, Multiple Listing ServiceÂ® and the associated logos are owned by The Canadian Real Estate Association (CREA) and identify the quality of services provided by real estate professionals who are members of CREA. Used under license.