

\$525,000 - 725 Atlantic Cove W, Lethbridge

MLS® #A2219840

\$525,000

4 Bedroom, 3.00 Bathroom, 1,095 sqft

Residential on 0.10 Acres

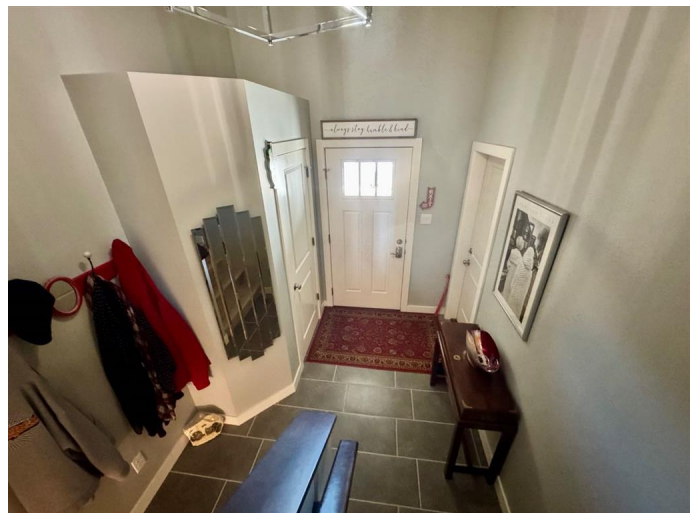
The Crossings, Lethbridge, Alberta

Welcome to this beautifully maintained bi-level home, perfectly situated in a peaceful neighborhood with exceptional convenience. Just steps away from top-rated schools, the YMCA, and a variety of restaurants, this home offers the ideal location for families and professionals alike.

This home boasts great curb appeal with a well-manicured landscape and a welcoming front entrance. Inside, the spacious bi-level layout maximizes space and functionality, offering comfortable living on both levels. The interior is adorned with neutral colors throughout, creating a warm and inviting atmosphere that is ready for your personal touch.

Large windows fill the home with natural light, enhancing the bright and airy feel of the living spaces. The functional kitchen is equipped with modern appliances, ample cabinetry, and plenty of counter space, making meal preparation a breeze. The generously sized bedrooms provide cozy retreats for the whole family, ensuring comfort and relaxation.

Pride of ownership is evident throughout, as this home has been lovingly cared for and meticulously maintained. The location is truly unbeatable, nestled in a quiet community while still offering easy access to schools, parks, the YMCA, shopping, and dining options.



Don't miss your chance to own this charming bi-level home in a fantastic neighborhood. Schedule your showing with your favourite REALTOR® today!

Built in 2017

Essential Information

| | |
|----------------|-------------|
| MLS® # | A2219840 |
| Price | \$525,000 |
| Bedrooms | 4 |
| Bathrooms | 3.00 |
| Full Baths | 2 |
| Half Baths | 1 |
| Square Footage | 1,095 |
| Acres | 0.10 |
| Year Built | 2017 |
| Type | Residential |
| Sub-Type | Detached |
| Style | Bi-Level |
| Status | Active |

Community Information

| | |
|-------------|---------------------|
| Address | 725 Atlantic Cove W |
| Subdivision | The Crossings |
| City | Lethbridge |
| County | Lethbridge |
| Province | Alberta |
| Postal Code | T1J 5M4 |

Amenities

| | |
|----------------|------------------------|
| Parking Spaces | 4 |
| Parking | Double Garage Attached |
| # of Garages | 2 |

Interior

| | |
|-------------------|---|
| Interior Features | No Smoking Home, Quartz Counters, Storage, Sump Pump(s), Vaulted Ceiling(s) |
| Appliances | Dishwasher, Electric Stove, Microwave, Refrigerator, Washer/Dryer, |

| | |
|--------------|------------------|
| | Window Coverings |
| Heating | Forced Air |
| Cooling | Central Air |
| Has Basement | Yes |
| Basement | Finished, Full |

Exterior

| | |
|-------------------|---|
| Exterior Features | None |
| Lot Description | Back Yard, Front Yard, Gentle Sloping, No Neighbours Behind |
| Roof | Asphalt Shingle |
| Construction | Composite Siding |
| Foundation | Poured Concrete |

Additional Information

| | |
|----------------|---------------|
| Date Listed | May 9th, 2025 |
| Days on Market | 5 |
| Zoning | R-CL |

Listing Details

| | |
|----------------|---------------------------|
| Listing Office | SUTTON GROUP - LETHBRIDGE |
|----------------|---------------------------|

Data is supplied by Pillar 9â„¢ MLS® System. Pillar 9â„¢ is the owner of the copyright in its MLS® System. Data is deemed reliable but is not guaranteed accurate by Pillar 9â„¢. The trademarks MLS®, Multiple Listing Service® and the associated logos are owned by The Canadian Real Estate Association (CREA) and identify the quality of services provided by real estate professionals who are members of CREA. Used under license.