

\$549,000 - 322 & 318 13221 Twp 680 Road, Lac La Biche

MLS® #A2219757

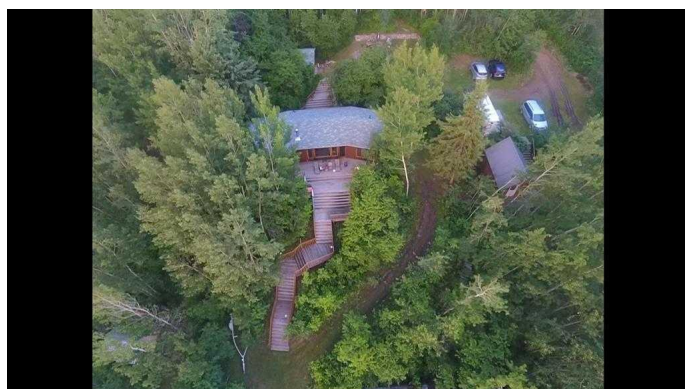
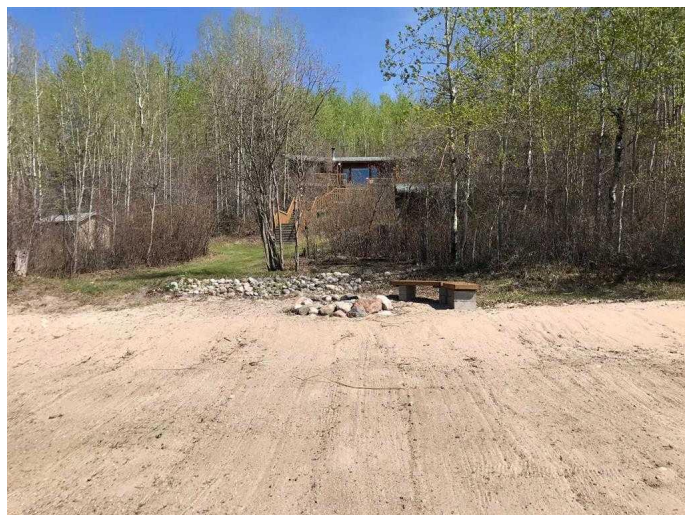
\$549,000

3 Bedroom, 1.00 Bathroom, 1,060 sqft
Residential on 1.96 Acres

Lac La Biche, Lac La Biche, Alberta

Escape to your dream summer getaway with this beautifully renovated seasonal home on the lake, offering over 150 feet of white sand beachfront. The main home features 3 spacious bedrooms, 1 full bathroom, and a bright, open-concept kitchen with rustic-modern charm. Curl up in front of the woodstove or bask in the sun on the decks. Vaulted wood ceilings, exposed beams, and unique lighting fixtures add warmth and character throughout. A cozy additional 1-bedroom + loft Knotty Pine guest cabin provides extra space for family and friends. Enjoy lake views from every window, relax on the sandy shore, or entertain in the open living and dining areas. Cabin has been extensively renovated with new windows, roof, flooring, plumbing and flooring! Just bring your swimsuit and toothbrush, because this turn-key offering includes furnishing, linens, dishes and cookware, plus lawn furniture and games, paddleboard, kayak, and misc. beach items. Golden Sands is a Lakefront Community nestled up to the shores of Lac La Biche Lake, offering a nice balance of full time and recreational residence. Amenities in the sub-division include a public beach, boat launch and playground. Well suited a Large Family or Multiple Families!

Built in 1983



Essential Information

| | |
|----------------|----------------------------------|
| MLS® # | A2219757 |
| Price | \$549,000 |
| Bedrooms | 3 |
| Bathrooms | 1.00 |
| Full Baths | 1 |
| Square Footage | 1,060 |
| Acres | 1.96 |
| Year Built | 1983 |
| Type | Residential |
| Sub-Type | Detached |
| Style | Acreage with Residence, Bungalow |
| Status | Active |

Community Information

| | |
|-------------|------------------------------|
| Address | 322 & 318 13221 Twp 680 Road |
| Subdivision | Lac La Biche |
| City | Lac La Biche |
| County | Lac La Biche County |
| Province | Alberta |
| Postal Code | T0A2C1 |

Amenities

| | |
|---------|------------|
| Parking | Off Street |
|---------|------------|

Interior

| | |
|-------------------|--|
| Interior Features | Beamed Ceilings |
| Appliances | Electric Stove, Refrigerator, Microwave Hood Fan |
| Heating | Baseboard |
| Cooling | None |
| Fireplace | Yes |
| # of Fireplaces | 1 |
| Fireplaces | Wood Burning |
| Basement | None |

Exterior

| | |
|-------------------|-------------------------|
| Exterior Features | Private Yard |
| Lot Description | Landscaped, Beach, Lake |
| Roof | Asphalt Shingle |

| | |
|--------------|-----------|
| Construction | Mixed |
| Foundation | Piling(s) |

Additional Information

| | |
|----------------|---------------------|
| Date Listed | May 8th, 2025 |
| Days on Market | 60 |
| Zoning | Country Residential |

Listing Details

| | |
|----------------|------------------------|
| Listing Office | RE/MAX LA BICHE REALTY |
|----------------|------------------------|

Data is supplied by Pillar 9â„¢ MLS® System. Pillar 9â„¢ is the owner of the copyright in its MLS® System. Data is deemed reliable but is not guaranteed accurate by Pillar 9â„¢. The trademarks MLS®, Multiple Listing Service® and the associated logos are owned by The Canadian Real Estate Association (CREA) and identify the quality of services provided by real estate professionals who are members of CREA. Used under license.