

# \$22,000 - 6 Prospect Avenue, Erskine

MLS® #A2218069

**\$22,000**

0 Bedroom, 0.00 Bathroom,  
Land on 0.19 Acres

NONE, Erskine, Alberta

HAMLET LIVING. Have your choice of lots!  
Erskine is a family orientated community. With K-9 School, Churches, Outdoor Skating Rink, Curling Rink Local Grocery/Grille, Antique Store. If building your new home on an affordable lot in a quiet community sounds enticing, this might be a place to call home. Only 7 minutes to Stettler, 40 minutes from Red Deer. Erskine's central location is a great choice.

## Essential Information

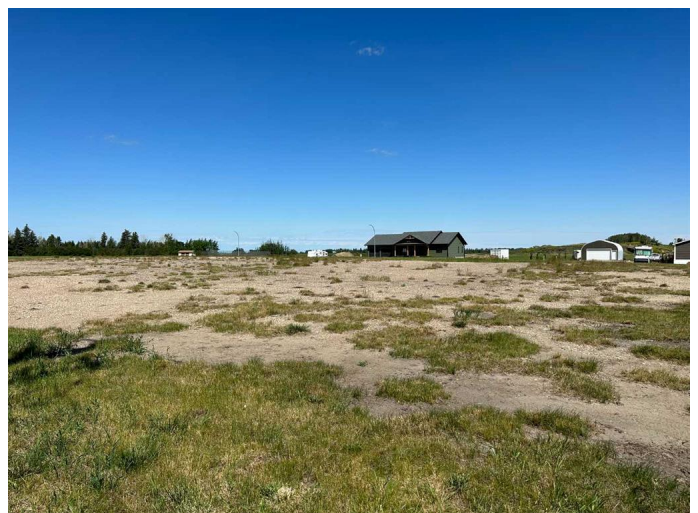
MLS® #	A2218069
Price	\$22,000
Bathrooms	0.00
Acres	0.19
Type	Land
Sub-Type	Residential Land
Status	Active

## Community Information

Address	6 Prospect Avenue
Subdivision	NONE
City	Erskine
County	Stettler No. 6, County of
Province	Alberta
Postal Code	T0C 1G0

## Amenities

Utilities	Electricity at Lot Line, Water At Lot Line, Natural Gas at Lot Line
-----------	---



**Exterior**

Lot Description      Level, Open Lot, See Remarks

**Additional Information**

Date Listed            May 5th, 2025  
Days on Market      101  
Zoning                 Residential

**Listing Details**

Listing Office            Royal LePage Central

Data is supplied by Pillar 9â„¢ MLS® System. Pillar 9â„¢ is the owner of the copyright in its MLS® System. Data is deemed reliable but is not guaranteed accurate by Pillar 9â„¢. The trademarks MLS®, Multiple Listing Service® and the associated logos are owned by The Canadian Real Estate Association (CREA) and identify the quality of services provided by real estate professionals who are members of CREA. Used under license.