

\$465,000 - 415 Regal Park Ne, Calgary

MLS® #A2217069

\$465,000

2 Bedroom, 3.00 Bathroom, 1,404 sqft

Residential on 0.00 Acres

Renfrew, Calgary, Alberta

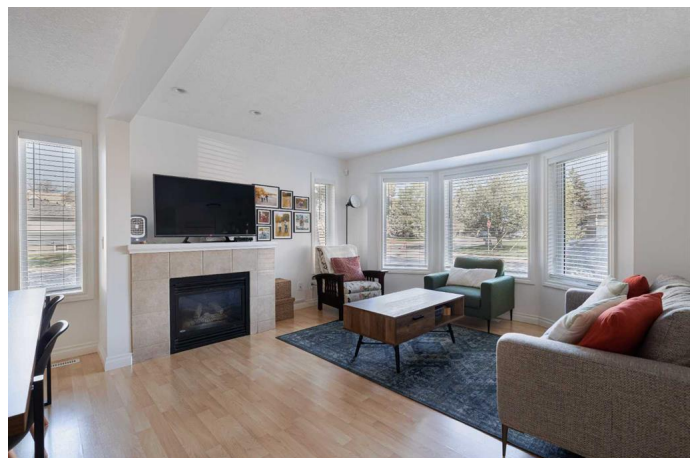
Welcome to 415 Regal Park Crescent NE â€”
A Beautifully Updated End-Unit Townhouse in
Desirable Renfrew!

This stylish and spacious home offers the perfect combination of modern updates, functional space, and an unbeatable location. With 1,400 sq. ft. above grade and over 1,800 sq. ft. of fully developed living space, itâ€™s ideal for families, professionals, or anyone looking to enjoy inner-city living without compromise.

Step inside to a bright and welcoming main floor, where fresh neutral paint and light-toned floors create an airy and inviting atmosphere. The open-concept living and dining areas are perfect for hosting, while the well-appointed kitchen shines with quartz countertops and stainless steel appliances.

Upstairs, youâ€™ll find a generous primary bedroom complete with a large walk-in closet and private ensuite. A second spacious bedroom, plus a versatile bonus room (easily converted to a third bedroom), offer flexibility for families or home offices.

The fully finished basement provides even more living space â€” ideal for family movie nights, a workout zone, or a kids' play area â€” and features abundant storage to keep things tidy.



Outside, enjoy your own private deck nestled among mature trees – a peaceful, shaded retreat perfect for morning coffee or summer BBQs. Your assigned parking stall is conveniently located just steps away.

Situated in sought-after Renfrew, you’re minutes from downtown Calgary, with easy access to Bridgeland’s trendy cafes, restaurants, parks, and major traffic routes. Whether commuting or exploring, everything you need is right at your doorstep.

Don’t miss your chance to own this move-in-ready townhouse in one of Calgary’s favourite inner-city neighbourhoods!

Built in 2000

Essential Information

MLS® #	A2217069
Price	\$465,000
Bedrooms	2
Bathrooms	3.00
Full Baths	2
Half Baths	1
Square Footage	1,404
Acres	0.00
Year Built	2000
Type	Residential
Sub-Type	Row/Townhouse
Style	2 Storey
Status	Active

Community Information

Address	415 Regal Park Ne
Subdivision	Renfrew
City	Calgary
County	Calgary

Province	Alberta
Postal Code	T2E 0S6

Amenities

Amenities	Parking, Visitor Parking
Parking Spaces	1
Parking	Assigned, Stall

Interior

Interior Features	No Smoking Home, Stone Counters, Vinyl Windows
Appliances	Dishwasher, Electric Range, Range Hood, Refrigerator, Washer/Dryer, Window Coverings
Heating	Forced Air
Cooling	None
Fireplace	Yes
# of Fireplaces	1
Fireplaces	Gas
Has Basement	Yes
Basement	Finished, Full

Exterior

Exterior Features	Other
Lot Description	Corner Lot, Treed
Roof	Asphalt Shingle
Construction	Concrete, Wood Frame
Foundation	Poured Concrete

Additional Information

Date Listed	May 6th, 2025
Days on Market	2
Zoning	M-C1

Listing Details

Listing Office	CIR Realty
----------------	------------

Data is supplied by Pillar 9â„¢ MLS® System. Pillar 9â„¢ is the owner of the copyright in its MLS® System. Data is deemed reliable but is not guaranteed accurate by Pillar 9â„¢. The trademarks MLS®, Multiple Listing Service® and the associated logos are owned by The Canadian Real Estate Association (CREA) and identify the quality of services provided by real estate professionals who are members of CREA. Used under license.