

# \$294,900 - 17 Greig Close, Red Deer

MLS® #A2216855

**\$294,900**

3 Bedroom, 2.00 Bathroom, 1,123 sqft

Residential on 0.08 Acres

Glendale Park Estates, Red Deer, Alberta

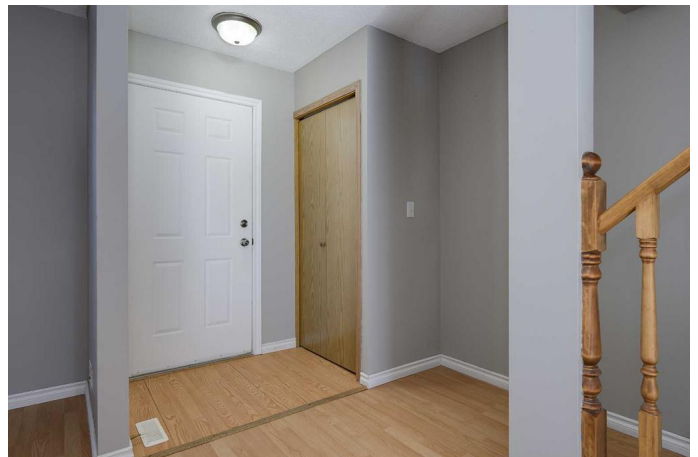
This townhouse has a good sized living room with wood burning fireplace on the main floor, 1 half bathroom and kitchen with recently replaced kitchen cabinets , back splash tile and counter tops. The second floor has 3 Bedrooms and master bedroom features his and her closets and 1 full bathroom also with newer cabinets. In the basement there is a second living room space and a separate room for the laundry which is rough in for another bathroom. This home is on a pie lot with an over-sized single detached garage with a paved lane way. There is a fully fenced private yard with a nice deck which boards were replaced a couple of years ago with pressure treated wood. There is a storage shed out back as well. Shingles on the house were replaced 3 years ago. Shingles on the garage and shed replaced 4 years. The New furnace was installed 4 years ago. All windows replaced with new 6 years ago. Located close to parks and St Teresa of Avila Elementary School. This is a perfect spot with just enough space for a young family starting out and at a manageable price. NOT A CONDO NO CONDO FEES

Built in 1987

## Essential Information

MLS® # A2216855

Price \$294,900



Bedrooms	3
Bathrooms	2.00
Full Baths	1
Half Baths	1
Square Footage	1,123
Acres	0.08
Year Built	1987
Type	Residential
Sub-Type	Row/Townhouse
Style	2 Storey
Status	Active

### Community Information

Address	17 Greig Close
Subdivision	Glendale Park Estates
City	Red Deer
County	Red Deer
Province	Alberta
Postal Code	T4P 3L6

### Amenities

Parking Spaces	3
Parking	Double Garage Detached, Garage Faces Rear, Insulated
# of Garages	2

### Interior

Interior Features	See Remarks
Appliances	Dishwasher, Refrigerator, Stove(s), Washer/Dryer
Heating	Fireplace(s), Forced Air, Natural Gas
Cooling	None
Fireplace	Yes
# of Fireplaces	1
Fireplaces	Wood Burning
Has Basement	Yes
Basement	Full, Partially Finished

### Exterior

Exterior Features	Private Yard, Storage
Lot Description	Back Lane, Back Yard, Pie Shaped Lot, Private, Treed

Roof	Shake
Construction	Vinyl Siding, Wood Frame
Foundation	Poured Concrete

### **Additional Information**

Date Listed	May 2nd, 2025
Days on Market	14
Zoning	R1

### **Listing Details**

Listing Office	Royal LePage Network Realty Corp.
----------------	-----------------------------------

Data is supplied by Pillar 9â„¢ MLSÂ® System. Pillar 9â„¢ is the owner of the copyright in its MLSÂ® System. Data is deemed reliable but is not guaranteed accurate by Pillar 9â„¢. The trademarks MLSÂ®, Multiple Listing ServiceÂ® and the associated logos are owned by The Canadian Real Estate Association (CREA) and identify the quality of services provided by real estate professionals who are members of CREA. Used under license.