

# \$899,000 - 6410 Township Road 120, Rural Cypress County

---

MLS® #A2216304

**\$899,000**

3 Bedroom, 2.00 Bathroom, 1,896 sqft  
Residential on 9.07 Acres

NONE, Rural Cypress County, Alberta

9 Acres off #3 Highway minutes from Medicine Hat, next to the John Deere dealership. Includes a 1896sq' bungalow home and 4 large quonsets (36x96) (36x71) (24x60) 50X130). Dugout with SMIRD outlet on property. Acreage is fenced and treed

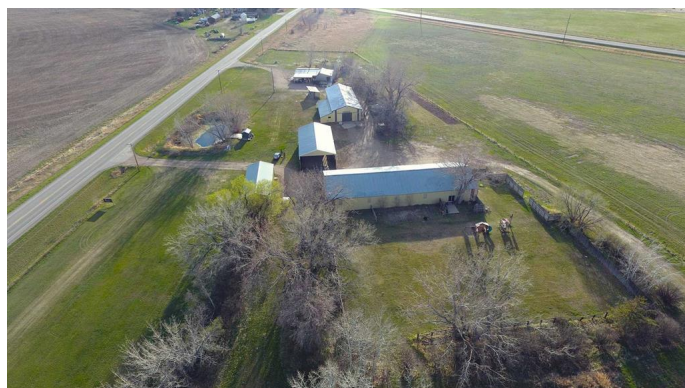
Built in 1953

## Essential Information

MLS® #	A2216304
Price	\$899,000
Bedrooms	3
Bathrooms	2.00
Full Baths	2
Square Footage	1,896
Acres	9.07
Year Built	1953
Type	Residential
Sub-Type	Detached
Style	Acreage with Residence, Bungalow
Status	Active

## Community Information

Address	6410 Township Road 120
Subdivision	NONE
City	Rural Cypress County
County	Cypress County



Province	Alberta
Postal Code	T1A 8M4

### Amenities

Parking	Attached Carport
---------	------------------

### Interior

Interior Features	Ceiling Fan(s), Kitchen Island
Appliances	Central Air Conditioner, Dishwasher, Electric Oven, Microwave, Refrigerator
Heating	Fireplace(s), Forced Air
Cooling	Central Air
Fireplace	Yes
# of Fireplaces	1
Fireplaces	Gas
Has Basement	Yes
Basement	Partial, Unfinished

### Exterior

Exterior Features	Balcony
Lot Description	Back Yard, Lawn
Roof	Asphalt
Construction	Stucco
Foundation	Poured Concrete

### Additional Information

Date Listed	May 1st, 2025
Days on Market	13
Zoning	A2

### Listing Details

Listing Office	ROYAL LEPAGE COMMUNITY REALTY
----------------	-------------------------------

Data is supplied by Pillar 9â„¢ MLSÂ® System. Pillar 9â„¢ is the owner of the copyright in its MLSÂ® System. Data is deemed reliable but is not guaranteed accurate by Pillar 9â„¢. The trademarks MLSÂ®, Multiple Listing ServiceÂ® and the associated logos are owned by The Canadian Real Estate Association (CREA) and identify the quality of services provided by real estate professionals who are members of CREA. Used under license.