

# \$269,500 - 2112 17 Street, Coaldale

MLS® #A2215604

## \$269,500

2 Bedroom, 1.00 Bathroom, 620 sqft

Residential on 0.16 Acres

NONE, Coaldale, Alberta

This practical bungalow has something you've been looking for - a 664 sq/ft detached garage! Centrally located and only steps from Coaldale's main street, Spray Park and more, this 2 bed, 1 bath home has convenience written all over it! Plentiful parking options, a turn key home and a spacious backyard to enjoy. There's a bright and open concept living, dining and kitchen area, 4 piece bathroom, laundry area and 2 bedrooms.

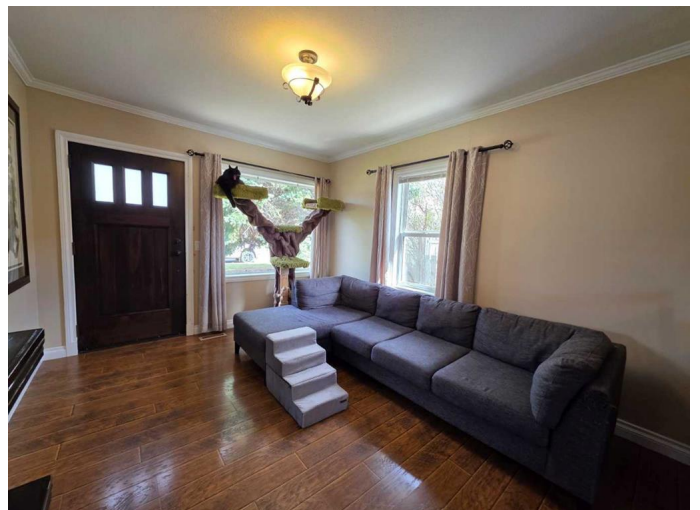
Built in 1959

### Essential Information

MLS® #	A2215604
Price	\$269,500
Bedrooms	2
Bathrooms	1.00
Full Baths	1
Square Footage	620
Acres	0.16
Year Built	1959
Type	Residential
Sub-Type	Detached
Style	Bungalow
Status	Active

### Community Information

Address	2112 17 Street
Subdivision	NONE



City	Coaldale
County	Lethbridge County
Province	Alberta
Postal Code	T1M 1G1

### **Amenities**

Parking Spaces	4
Parking	Double Garage Detached
# of Garages	4

### **Interior**

Interior Features	Closet Organizers, Open Floorplan
Appliances	Microwave Hood Fan, Refrigerator, Stove(s), Washer/Dryer, Window Coverings
Heating	Forced Air
Cooling	None
Has Basement	Yes
Basement	Crawl Space, Partial

### **Exterior**

Exterior Features	Other
Lot Description	Back Lane, Back Yard, City Lot, Landscaped
Roof	Asphalt Shingle
Construction	Stucco
Foundation	Poured Concrete

### **Additional Information**

Date Listed	April 30th, 2025
Days on Market	17
Zoning	R1A

### **Listing Details**

Listing Office	Grassroots Realty Group
----------------	-------------------------

Data is supplied by Pillar 9â„¢ MLSÂ® System. Pillar 9â„¢ is the owner of the copyright in its MLSÂ® System. Data is deemed reliable but is not guaranteed accurate by Pillar 9â„¢. The trademarks MLSÂ®, Multiple Listing ServiceÂ® and the associated logos are owned by The Canadian Real Estate Association (CREA) and identify the quality of services provided by real estate professionals who are members of CREA. Used under license.