

\$1,260,000 - 270230 Dead Horse Road Se, Rural Rocky View County

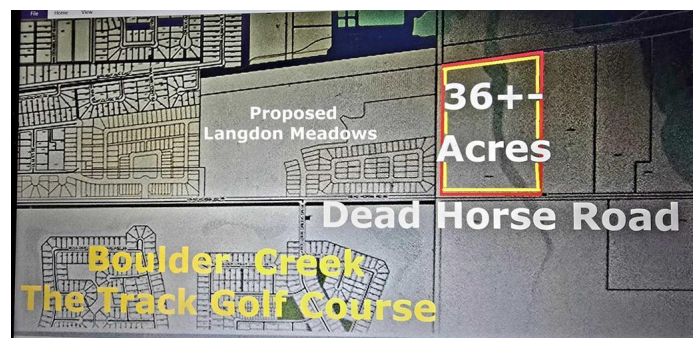
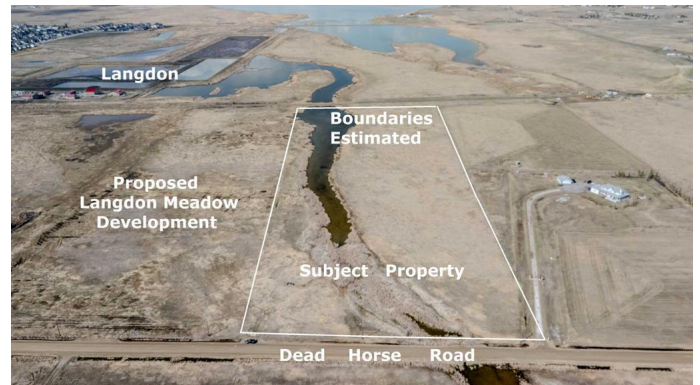
MLS® #A2214751

\$1,260,000

0 Bedroom, 0.00 Bathroom,
Land on 35.98 Acres

NONE, Rural Rocky View County, Alberta

36+- Acres on Dead Horse Road immediately Adjacent to the proposed Langdon Meadow Phase 1 residential development and nearby to Boulder Creek and The Track Golf Course. Lots of development underway in Langdon and a great opportunity to plan for the future. GST may be applicable.



Essential Information

MLS® #	A2214751
Price	\$1,260,000
Bathrooms	0.00
Acres	35.98
Type	Land
Sub-Type	Commercial Land
Status	Active

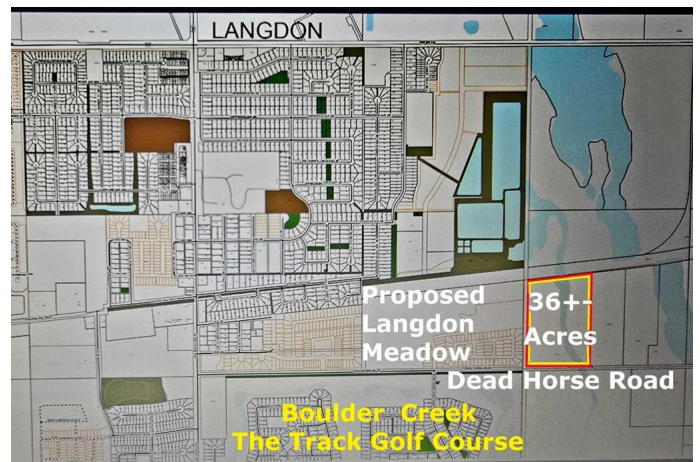
Community Information

Address	270230 Dead Horse Road Se
Subdivision	NONE
City	Rural Rocky View County
County	Rocky View County
Province	Alberta
Postal Code	T0J 1X2

Amenities

Utilities	Natural Gas Available, Electricity Available
-----------	----------------------------------------------

Additional Information



Date Listed	April 30th, 2025
Days on Market	14
Zoning	A-SML

Listing Details

Listing Office	Legacy Real Estate Services
----------------	-----------------------------

Data is supplied by Pillar 9â„¢ MLSÂ® System. Pillar 9â„¢ is the owner of the copyright in its MLSÂ® System. Data is deemed reliable but is not guaranteed accurate by Pillar 9â„¢. The trademarks MLSÂ®, Multiple Listing ServiceÂ® and the associated logos are owned by The Canadian Real Estate Association (CREA) and identify the quality of services provided by real estate professionals who are members of CREA. Used under license.