

# \$500,000 - 358 Castleridge Drive, Calgary

MLS® #A2206419

## \$500,000

3 Bedroom, 2.00 Bathroom, 823 sqft

Residential on 0.06 Acres

Castleridge, Calgary, Alberta

### THE MOST WALKABLE LOCATION IN NE!

Walk to shopping, restaurants and restaurants, mosque, park, tennis courts and more! You basically have access to any business within a 5 minute drive. Amazing investment opportunity when you have a location like this, and also on a bus line, allowing you to rent to anyone for top dollar. About the house: Siding was done recently as well as the roof, and windows and side door. New Hot water tank, high-efficiency furnace, water softner.

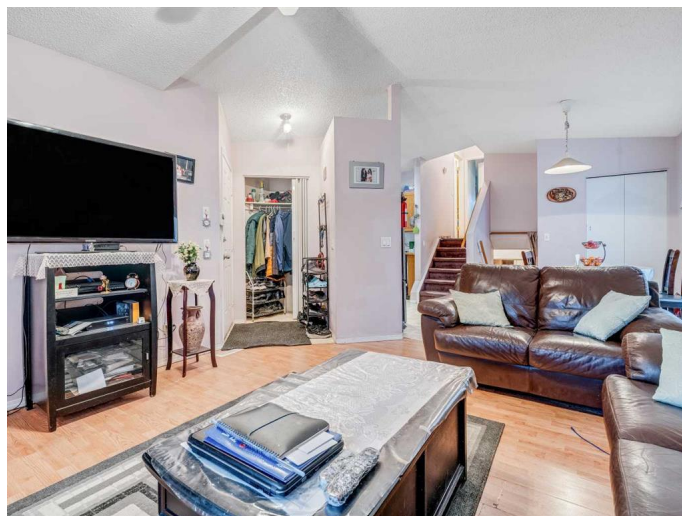
Built in 1987

### Essential Information

MLS® #	A2206419
Price	\$500,000
Bedrooms	3
Bathrooms	2.00
Full Baths	2
Square Footage	823
Acres	0.06
Year Built	1987
Type	Residential
Sub-Type	Detached
Style	4 Level Split
Status	Active

### Community Information

Address	358 Castleridge Drive
Subdivision	Castleridge



City	Calgary
County	Calgary
Province	Alberta
Postal Code	T3J3C4

### **Amenities**

Parking Spaces	1
Parking	Off Street

### **Interior**

Interior Features	Open Floorplan
Appliances	Dishwasher, Electric Range, Refrigerator, Washer/Dryer
Heating	High Efficiency, Fireplace(s)
Cooling	None
Fireplace	Yes
# of Fireplaces	1
Fireplaces	Wood Burning
Has Basement	Yes
Basement	Full, Partially Finished

### **Exterior**

Exterior Features	Storage
Lot Description	Back Yard
Roof	Asphalt Shingle
Construction	Other
Foundation	Poured Concrete

### **Additional Information**

Date Listed	March 27th, 2025
Days on Market	38
Zoning	R-CG

### **Listing Details**

Listing Office	eXp Realty
----------------	------------

Data is supplied by Pillar 9â„¢ MLS® System. Pillar 9â„¢ is the owner of the copyright in its MLS® System. Data is deemed reliable but is not guaranteed accurate by Pillar 9â„¢. The trademarks MLS®, Multiple Listing Service® and the associated logos are owned by The Canadian Real Estate Association (CREA) and identify the quality of services provided by real estate professionals who are members of CREA. Used under license.