

\$535,000 - Se-22-71-4-w6, Rural Grande Prairie No. 1, County of

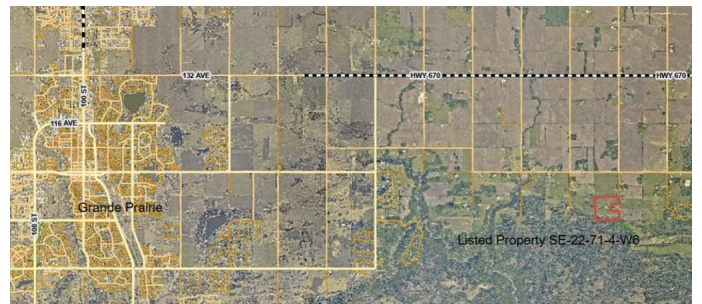
MLS® #A2205445

\$535,000

0 Bedroom, 0.00 Bathroom,
Agri-Business on 146.00 Acres

NONE, Rural Grande Prairie No. 1, County of, Alberta

What an opportunity! A beautiful quarter section less than 20 minutes east of Grande Prairie, at the end of range road 42, bordering crown land. Whether you are looking to add to your existing farming operation, want to establish a homestead, get a place where you can set up a cabin to getaway from the City or are looking at the investment potential of subdividing the land into residential acreages, you are not going to want to miss this opportunity. The land has a gentle rolling topography, and a stand of evergreen trees along the south border. The cultivated land is currently in hay and will be ready for a new buyer to harvest this summer or have a neighbouring rancher crop on shares. The south side of this property abuts a crown land grazing lease with thousands of acres of recreational crown land beyond the Wapiti Corridor Recreation Area. For more information or to arrange a viewing of this property reach out to your favorite Real Estate Professional!



Essential Information

MLS® #	A2205445
Price	\$535,000
Bathrooms	0.00
Acres	146.00

Type	Agri-Business
Sub-Type	Agriculture
Status	Active

Community Information

Address	Se-22-71-4-w6
Subdivision	NONE
City	Rural Grande Prairie No. 1, County of
County	Grande Prairie No. 1, County of
Province	Alberta
Postal Code	T8X 4C8

Additional Information

Date Listed	March 25th, 2025
Days on Market	54
Zoning	AG

Listing Details

Listing Office	Royal LePage - The Realty Group
----------------	---------------------------------

Data is supplied by Pillar 9â„¢ MLS® System. Pillar 9â„¢ is the owner of the copyright in its MLS® System. Data is deemed reliable but is not guaranteed accurate by Pillar 9â„¢. The trademarks MLS®, Multiple Listing Service® and the associated logos are owned by The Canadian Real Estate Association (CREA) and identify the quality of services provided by real estate professionals who are members of CREA. Used under license.