

# \$1,400 - A, 27 Pinnacle Crossing, Grande Prairie

MLS® #A2205054

**\$1,400**

2 Bedroom, 1.00 Bathroom, 799 sqft

Rental on 0.00 Acres

Pinnacle Ridge., Grande Prairie, Alberta

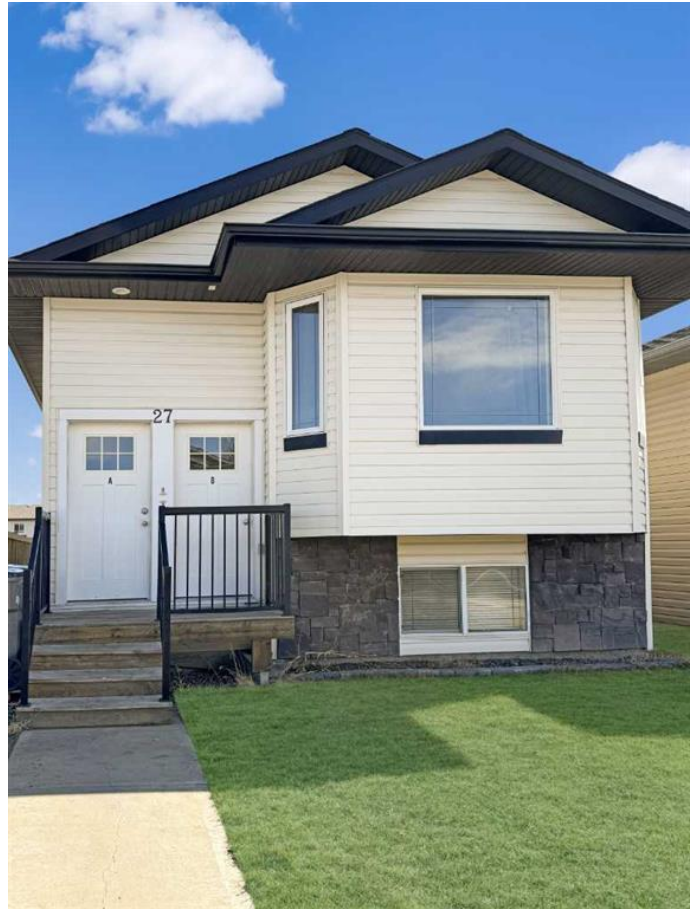
2 bed 1 bath lower suite in Pinnacle!

Open living dining space. Modern kitchen with 2 tone cabinets, tiled backsplash and stainless appliances. Large rooms on opposite ends of the unit from one another. Full 4 piece bathroom with extra cabinet space, tiled tub surround and backsplash. Access to back yard, not fenced.

Water included.

Pet Friendly with approval and \$50/mo pet fee.

Application required prior to viewing.



## Essential Information

MLS® # A2205054

Price \$1,400

Bedrooms 2

Bathrooms 1.00

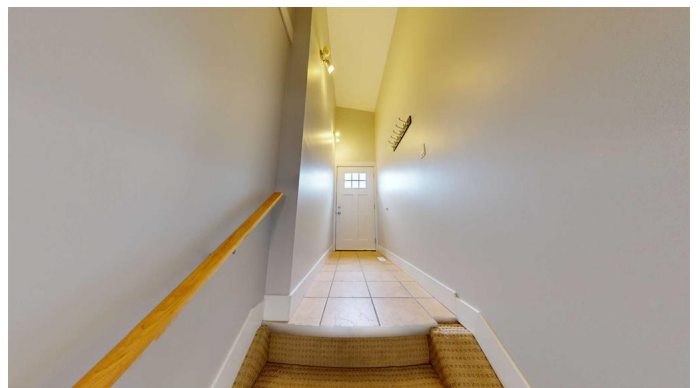
Full Baths 1

Square Footage 799

Acres 0.00

Type Rental

Status Active



## Community Information

Address A, 27 Pinnacle Crossing

Subdivision Pinnacle Ridge.

City Grande Prairie

County Grande Prairie

Province Alberta



Postal Code T8W0A9

### **Amenities**

Parking Parking Pad

### **Interior**

Appliances Dishwasher, Oven, Range Hood, Refrigerator, Stove(s), Washer/Dryer

### **Exterior**

Roof Asphalt Shingle

### **Additional Information**

Date Listed March 24th, 2025

Days on Market 52

### **Listing Details**

Listing Office Grassroots Realty Group Ltd.

Data is supplied by Pillar 9â„¢ MLS® System. Pillar 9â„¢ is the owner of the copyright in its MLS® System. Data is deemed reliable but is not guaranteed accurate by Pillar 9â„¢. The trademarks MLS®, Multiple Listing Service® and the associated logos are owned by The Canadian Real Estate Association (CREA) and identify the quality of services provided by real estate professionals who are members of CREA. Used under license.