

\$779,000 - 135 Ridge View Green, Cochrane

MLS® #A2203902

\$779,000

3 Bedroom, 3.00 Bathroom, 2,715 sqft

Residential on 0.11 Acres

River Song, Cochrane, Alberta

OPEN HOUSE ON SATURDAY, APRIL 26TH, 1:00 TO 4:00. Incredible Cal Bridge home in the wonderful community of River Song.

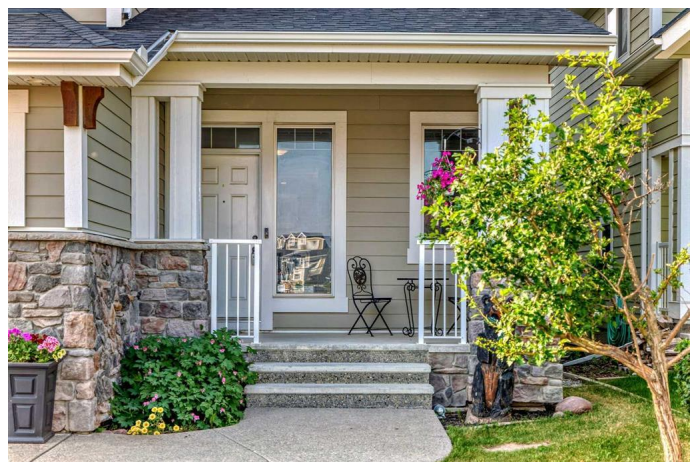
Outside the house is beautifully done with Hardie board siding, cedar accents, exposed aggregate driveway, and large front porch to enjoy a coffee or tea in the morning. Walk in and you are greeted with a full

height ceiling leading you into a stunning main floor layout. 9ft knockdowns throughout, 4â€• Alder hardwood flooring. Large dining room features a 2 sided gas fireplace with tile surrounding. Gourmet kitchen features full height cupboards, granite, extra pot drawers, built in maple panty, SS appliances, and a large island with bar seating. The formal living room has a

shared fireplace, coffered ceilings and large windows giving views of the yard and deck. Also

included on the main floor is a formal office with a built in desk and filing drawers, mudroom

connecting to the garage and half bathroom. Upstairs you will find a large bonus room with vaulted ceilings. 2 good sized bedrooms and an oversized master with 5pc en-suite, vaulted ceilings and a large walk-in closet. The laundry is located on the upper floor where it is needed the most and is opposite the 4pc guest bathroom. The large un-finished basement is ready to be



developed into your dream space and includes 8â€™-6â€™ ceilings, large windows and rough ins for a bathroom and wet bar. The backyard features a large deck with plenty of storage room underneath, a lower wood deck and a built in storage shed. Located close to Bow Valley high school and the upcoming K-8 school and a two minute walk from the ridge view pathway leading through the ravine down to the river. Come and check out this beautiful property in beautiful Cochrane as it's a perfect place to grow with your family. Please book your private showing today!!

Built in 2010

Essential Information

| | |
|----------------|-------------|
| MLS® # | A2203902 |
| Price | \$779,000 |
| Bedrooms | 3 |
| Bathrooms | 3.00 |
| Full Baths | 2 |
| Half Baths | 1 |
| Square Footage | 2,715 |
| Acres | 0.11 |
| Year Built | 2010 |
| Type | Residential |
| Sub-Type | Detached |
| Style | 2 Storey |
| Status | Active |

Community Information

| | |
|-------------|----------------------|
| Address | 135 Ridge View Green |
| Subdivision | River Song |
| City | Cochrane |
| County | Rocky View County |
| Province | Alberta |

Postal Code T4C 0J1

Amenities

Parking Spaces 5
Parking Double Garage Attached
of Garages 2

Interior

Interior Features High Ceilings, Bathroom Rough-in, Granite Counters, Vaulted Ceiling(s)
Appliances Dishwasher, Microwave, Range Hood, Refrigerator, Stove(s), Washer/Dryer, Window Coverings, Freezer, Other, See Remarks
Heating Forced Air, Natural Gas
Cooling None
Fireplace Yes
of Fireplaces 1
Fireplaces Gas
Has Basement Yes
Basement Full, Unfinished

Exterior

Exterior Features BBQ gas line, Rain Gutters
Lot Description Back Yard, Landscaped, Lawn, Rectangular Lot, See Remarks, Yard Drainage
Roof Asphalt Shingle
Construction Composite Siding, Wood Frame
Foundation Poured Concrete

Additional Information

Date Listed March 26th, 2025
Days on Market 42
Zoning R-LD

Listing Details

Listing Office CIR Realty

Data is supplied by Pillar 9â„¢ MLS® System. Pillar 9â„¢ is the owner of the copyright in its MLS® System. Data is deemed reliable but is not guaranteed accurate by Pillar 9â„¢. The trademarks MLS®, Multiple Listing Service® and the associated logos are owned by The Canadian Real Estate Association (CREA) and identify the quality of services provided by real estate professionals who are members of CREA. Used under license.