

\$639,000 - 5913 Panorama Drive, Blackfalds

MLS® #A2196803

\$639,000

3 Bedroom, 3.00 Bathroom, 1,740 sqft
Residential on 0.07 Acres

Panorama Estates, Blackfalds, Alberta

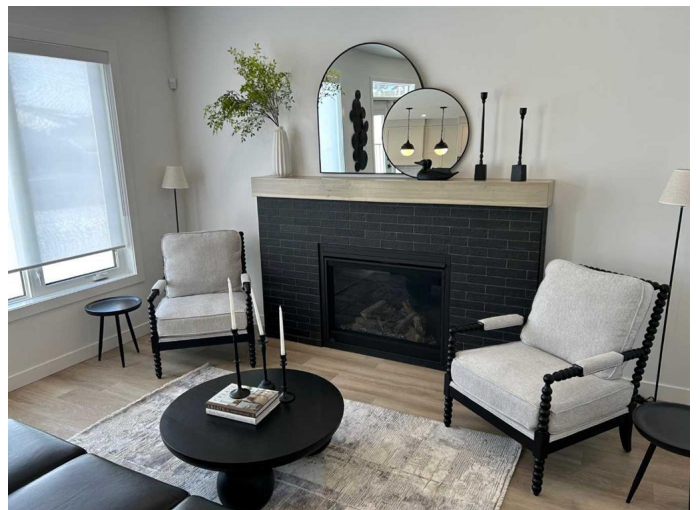
Welcome to this stunning 2 Storey home by Abbey Platinum Master Built. This 1740 sq. ft. home has an amazing curb appeal. A spacious entrance greets you as you enter this 3 bedroom 2.5 bath home. An open floor plan features a large bright kitchen with a huge island & walk through pantry. Amazing back splash in "Artisan" 2 x 8 glossy white in brick jointed layout. Upgraded kitchen sink in black.

A west facing 10' x 12' deck is just off the kitchen. Cozy great room is open to the kitchen & has an upgraded Napoleon "Ascent 42" fireplace with black brick surround. As you walk up the stairs you will find a huge primary bedroom with an incredible 5 piece ensuite (double sinks, soaker tub, separate shower & toilet. The walk-in closet completes this beautiful room.. Bedroom 2 also has a walk in closet. Bedroom 3 is also good sized. An upstairs laundry makes for added convenience. 9' basement ceiling and has oversized 60' x 36' basement window. Great potential down! High efficient furnace with heat recovery & ventilator. Cambridge 30 year shingles. The list of features can go on and on in this beautiful executive home. An absolute must see!

Built in 2024

Essential Information

MLS® #	A2196803
Price	\$639,000



Bedrooms	3
Bathrooms	3.00
Full Baths	2
Half Baths	1
Square Footage	1,740
Acres	0.07
Year Built	2024
Type	Residential
Sub-Type	Detached
Style	2 Storey
Status	Active

Community Information

Address	5913 Panorama Drive
Subdivision	Panorama Estates
City	Blackfalds
County	Lacombe County
Province	Alberta
Postal Code	T4M 0N9

Amenities

Parking Spaces	2
Parking	Single Garage Detached
# of Garages	2

Interior

Interior Features	High Ceilings, Kitchen Island, Pantry, Soaking Tub, Vinyl Windows, Walk-In Closet(s)
Appliances	Dishwasher, Refrigerator, Stove(s), Washer/Dryer
Heating	High Efficiency, Forced Air, Natural Gas
Cooling	None
Fireplace	Yes
# of Fireplaces	1
Fireplaces	Gas, Great Room, Brick Facing, See Remarks
Has Basement	Yes
Basement	Full, Unfinished

Exterior

Exterior Features	Other
-------------------	-------

Lot Description	City Lot
Roof	Asphalt Shingle
Construction	Vinyl Siding
Foundation	Poured Concrete

Additional Information

Date Listed	February 24th, 2025
Days on Market	79
Zoning	R1M

Listing Details

Listing Office	Royal LePage Network Realty Corp.
----------------	-----------------------------------

Data is supplied by Pillar 9â„¢ MLS® System. Pillar 9â„¢ is the owner of the copyright in its MLS® System. Data is deemed reliable but is not guaranteed accurate by Pillar 9â„¢. The trademarks MLS®, Multiple Listing Service® and the associated logos are owned by The Canadian Real Estate Association (CREA) and identify the quality of services provided by real estate professionals who are members of CREA. Used under license.