

# \$499,900 - Lot2 Grey Fox Place E, Rural Foothills County

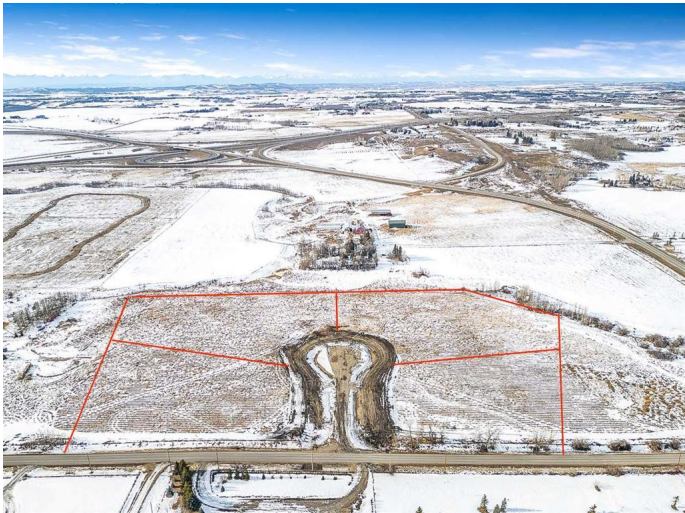
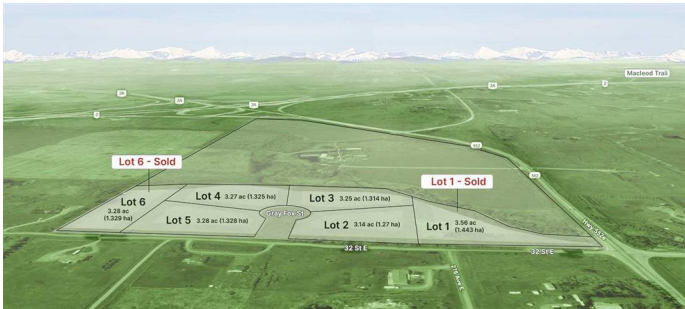
MLS® #A2196748

**\$499,900**

0 Bedroom, 0.00 Bathroom,  
Land on 3.14 Acres

NONE, Rural Foothills County, Alberta

With a Mountain Peak view this lot is nestled in a picturesque countryside setting. The 3.14-acre parcel offers pastoral views and the perfect opportunity to build your dream home with your choice for a builder. Conveniently located just minutes south of Calgary, this property features natural gas and power at the property line, with an inner road to be paved for easy access. No building commitment. Close to schools and recreational amenities, it combines the tranquility of rural living with the convenience of nearby services. Architectural controls are in place to protect the integrity and value of the subdivision, ensuring a cohesive and beautiful community. Donâ€™t miss this rare chance to enjoy country living with city conveniences just a short drive away! GST is included in price.



## Essential Information

MLS® #	A2196748
Price	\$499,900
Bathrooms	0.00
Acres	3.14
Type	Land
Sub-Type	Residential Land
Status	Active

## Community Information

Address	Lot2 Grey Fox Place E
Subdivision	NONE
City	Rural Foothills County
County	Foothills County
Province	Alberta
Postal Code	T1S 3P1

### **Amenities**

Utilities	Electricity at Lot Line, Natural Gas at Lot Line
-----------	--------------------------------------------------

### **Additional Information**

Date Listed	February 21st, 2025
Days on Market	105
Zoning	CRES

### **Listing Details**

Listing Office	RE/MAX Complete Realty
----------------	------------------------

Data is supplied by Pillar 9â„¢ MLS® System. Pillar 9â„¢ is the owner of the copyright in its MLS® System. Data is deemed reliable but is not guaranteed accurate by Pillar 9â„¢. The trademarks MLS®, Multiple Listing Service® and the associated logos are owned by The Canadian Real Estate Association (CREA) and identify the quality of services provided by real estate professionals who are members of CREA. Used under license.