

# \$188,000 - 226, 4600 130 Avenue Se, Calgary

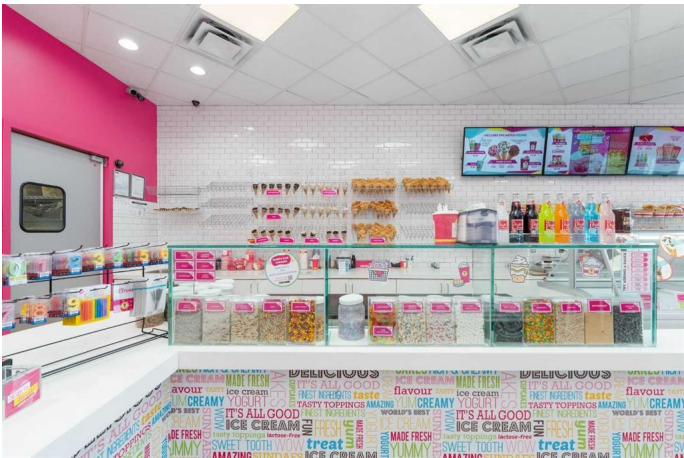
MLS® #A2195107

**\$188,000**

0 Bedroom, 0.00 Bathroom,  
Commercial on 0.00 Acres

New Brighton, Calgary, Alberta

Looking to be your own boss and run a profitable business? Look no further than this marble slab franchise located in a fantastic neighborhood with desirable demographics and plenty of traffic. This turn-key operation is ready for you to step in and start making money from day one. This franchise has a proven history of success and is located in a complex with major anchor stores and tons of brand name stores, ensuring a steady stream of foot traffic. Plus, with a professionally managed operation, you can focus on running the business and serving up delicious ice cream to your satisfied customers. Don't miss out on this opportunity to own a thriving business in a prime location. Contact us today to learn more about this exciting franchise opportunity. The potential Buyer must sign confidentiality agreement before any business information is released. Please don't disturb owner or staff for any questions.



Built in 2006

## Essential Information

MLS® #	A2195107
Price	\$188,000
Bathrooms	0.00
Acres	0.00
Year Built	2006
Type	Commercial
Sub-Type	Retail

Status	Active
--------	--------

### Community Information

Address	226, 4600 130 Avenue Se
Subdivision	New Brighton
City	Calgary
County	Calgary
Province	Alberta
Postal Code	T2Z 0C2

### Additional Information

Date Listed	February 18th, 2025
Days on Market	87

### Listing Details

Listing Office	RE/MAX Realty Professionals
----------------	-----------------------------

Data is supplied by Pillar 9â„¢ MLS® System. Pillar 9â„¢ is the owner of the copyright in its MLS® System. Data is deemed reliable but is not guaranteed accurate by Pillar 9â„¢. The trademarks MLS®, Multiple Listing Service® and the associated logos are owned by The Canadian Real Estate Association (CREA) and identify the quality of services provided by real estate professionals who are members of CREA. Used under license.