

\$15 - 110, 2880 107 Avenue Se, Calgary

MLS® #A2192453

\$15

0 Bedroom, 0.00 Bathroom,
Commercial on 1.89 Acres

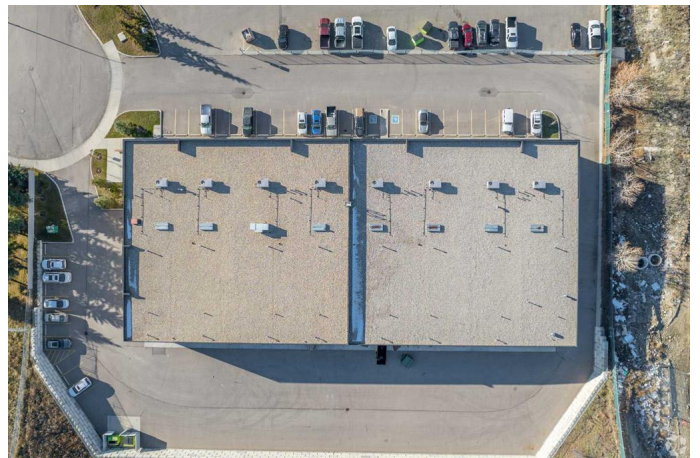
Shepard Industrial, Calgary, Alberta

This 3,680 SF industrial warehouse offers a functional layout with 115 ft depth by 32 ft width and a 75 ft clear loading area at the rear, making it ideal for warehousing, distribution, or light manufacturing. The front office space includes three private offices, a reception area, a kitchenette, and a washroom, providing a professional workspace alongside warehouse operations. Built in 2014, this well-maintained property is located in a prime SE industrial area, offering easy access to Barlow Trail SE, Deerfoot Trail SE, and 114th Avenue SE. Its strategic location ensures seamless transportation and logistics, making it a great opportunity for businesses looking to establish or expand their operations. With a modern design and excellent accessibility, this space is well-suited for a variety of industrial uses. Donâ€™t miss out on this outstanding opportunityâ€”contact us today for more details or to schedule a viewing!

Built in 2013

Essential Information

MLS® #	A2192453
Price	\$15
Bathrooms	0.00
Acres	1.89
Year Built	2013
Type	Commercial
Sub-Type	Industrial



Status Active

Community Information

Address 110, 2880 107 Avenue Se
Subdivision Shepard Industrial
City Calgary
County Calgary
Province Alberta
Postal Code T2Z3R7

Additional Information

Date Listed February 4th, 2025
Days on Market 102
Zoning I-G

Listing Details

Listing Office CDN Global Advisors Ltd.

Data is supplied by Pillar 9â„¢ MLSÂ® System. Pillar 9â„¢ is the owner of the copyright in its MLSÂ® System. Data is deemed reliable but is not guaranteed accurate by Pillar 9â„¢. The trademarks MLSÂ®, Multiple Listing ServiceÂ® and the associated logos are owned by The Canadian Real Estate Association (CREA) and identify the quality of services provided by real estate professionals who are members of CREA. Used under license.