

\$369,900 - 3206, 6 Merganser Drive W, Chestermere

MLS® #A2184986

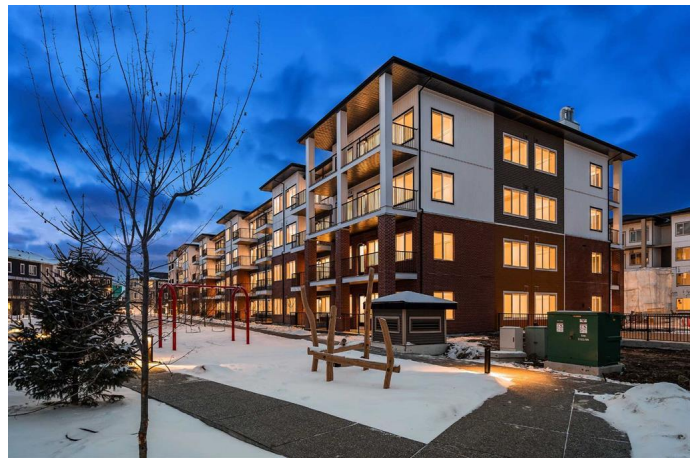
\$369,900

2 Bedroom, 2.00 Bathroom, 693 sqft

Residential on 0.00 Acres

Chelsea_CH, Chestermere, Alberta

New Lockwood Condos by TRUMAN in Chelsea! This beautifully designed unit features 2 bedrooms, 2 bathrooms, plus a den, and comes with 2 titled parking stalls. Nestled in the desirable and growing community of Chelsea in Chestermere, youâ€™re just minutes away from a wealth of local amenities. Enjoy easy access to Chestermere Lake, where you can indulge in outdoor recreation, as well as nearby parks, walking trails, and playgrounds. Shopping and dining options are also just a short drive away, with the Chestermere Station and Chestermere Crossing offering a variety of stores, cafes, and essential services. Step inside to an open-concept floor plan with a den thatâ€™s perfect for a home office. The home boasts the highest-quality finishes, including luxurious vinyl plank flooring throughout the living areas and high ceilings. The kitchen is a chefâ€™s dream, with full-height cabinetry, soft-close doors and drawers, a sleek stainless steel appliance package, and a pantry. The elegant quartz countertops, paired with an eat-up bar, offer a perfect spot for casual dining and entertaining. The primary bedroom is a true retreat, featuring a spacious walk-through closet and a 3-piece ensuite. An additional well-sized bedroom, a 4-piece main bathroom, and convenient in-suite laundry round out this ideal layout. Beyond the front door, enjoy a host of amenities designed to enhance your lifestyle. Stay active in the fully-equipped gym, or unwind in the owners' lounge. Plus, with



convenient bike storage, exploring the beautiful surroundings has never been easier. This bright, airy home is move-in ready, offering you the perfect opportunity to experience the exceptional TRUMAN lifestyle. Live better, right here in the heart of Chelsea in Chestermere! *Photo gallery of similar home*

Built in 2024

Essential Information

MLS® #	A2184986
Price	\$369,900
Bedrooms	2
Bathrooms	2.00
Full Baths	2
Square Footage	693
Acres	0.00
Year Built	2024
Type	Residential
Sub-Type	Apartment
Style	Apartment
Status	Active

Community Information

Address	3206, 6 Merganser Drive W
Subdivision	Chelsea_CH
City	Chestermere
County	Chestermere
Province	Alberta
Postal Code	T1X2Y2

Amenities

Amenities	Parking, Playground, Snow Removal, Trash, Visitor Parking, Bicycle Storage, Elevator(s), Fitness Center, Party Room
Parking Spaces	2
Parking	Stall, Titled

Interior

Interior Features	See Remarks
Appliances	Dishwasher, Microwave Hood Fan, Range, Refrigerator, Washer/Dryer, Window Coverings
Heating	Baseboard
Cooling	None
# of Stories	4
Basement	None

Exterior

Exterior Features	Balcony
Roof	Membrane
Construction	Composite Siding
Foundation	Poured Concrete

Additional Information

Date Listed	March 6th, 2025
Days on Market	62
Zoning	M-2

Listing Details

Listing Office	RE/MAX Real Estate (Central)
----------------	------------------------------

Data is supplied by Pillar 9â„¢ MLS® System. Pillar 9â„¢ is the owner of the copyright in its MLS® System. Data is deemed reliable but is not guaranteed accurate by Pillar 9â„¢. The trademarks MLS®, Multiple Listing Service® and the associated logos are owned by The Canadian Real Estate Association (CREA) and identify the quality of services provided by real estate professionals who are members of CREA. Used under license.