

# \$119,500 - PI 1024930, Blk 2, Lot 3 Lakeland Drive, Lac La Biche

---

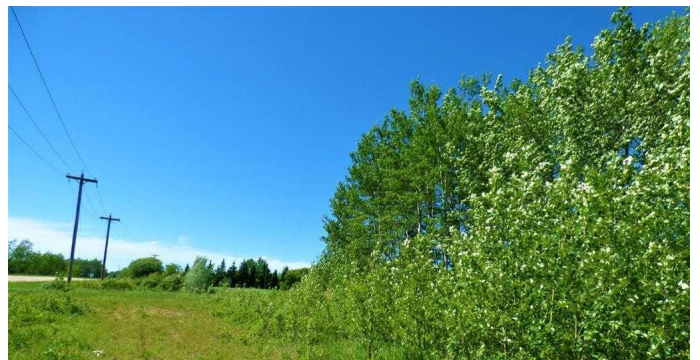
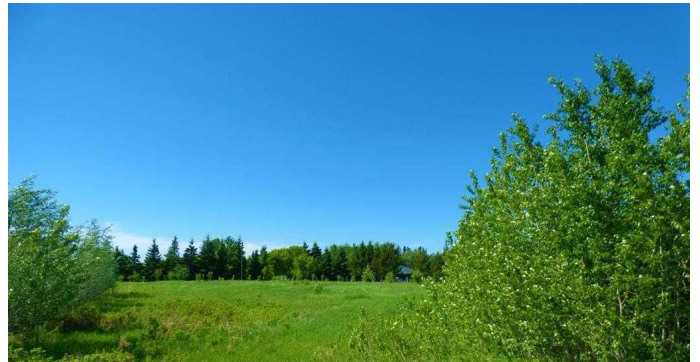
MLS® #A2172288

**\$119,500**

0 Bedroom, 0.00 Bathroom,  
Land on 5.91 Acres

NONE, Lac La Biche, Alberta

Country Acreage minutes from Lac La Biche!!!!!! 5.91 acres on a paved access road and visible from highway 881, on Lakeland Drive!!! Power and Natural Gas available to bring in. The parcel has an opened building site surrounded by natural trees, located close to corner gas! Enjoy being in the country but only minutes to enjoy the golf course, Churchill Park, boat launches, and all the town amenities!!! Lots of space to build a home, cabin, or use as a recreational get away! \$119,500.00



## Essential Information

MLS® #	A2172288
Price	\$119,500
Bathrooms	0.00
Acres	5.91
Type	Land
Sub-Type	Residential Land
Status	Active

## Community Information

Address	PI 1024930, Blk 2, Lot 3 Lakeland Drive
Subdivision	NONE
City	Lac La Biche
County	Lac La Biche County
Province	Alberta

Postal Code            T0A2C0

**Additional Information**

Date Listed            October 10th, 2024  
Days on Market        217  
Zoning                  Rural Residential

**Listing Details**

Listing Office           RE/MAX LA BICHE REALTY

Data is supplied by Pillar 9â„¸ MLSÂ® System. Pillar 9â„¸ is the owner of the copyright in its MLSÂ® System. Data is deemed reliable but is not guaranteed accurate by Pillar 9â„¸. The trademarks MLSÂ®, Multiple Listing ServiceÂ® and the associated logos are owned by The Canadian Real Estate Association (CREA) and identify the quality of services provided by real estate professionals who are members of CREA. Used under license.