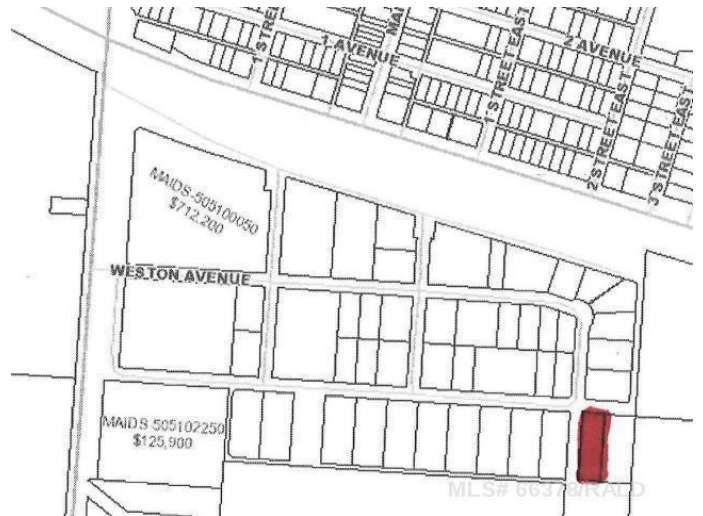


MLS® #A2150384

0 Bedroom, 0.00 Bathroom,
Commercial on 0.77 Acres

Large corner lot in the Maidstone Industrial Park, approximately .77 of an acre or 102'x326' at the junction of Weston and Pearson Little Avenues. Power to site. Water and natural gas available at street.



MLS® #	A2150384
Price	\$22,000
Bathrooms	0.00
Acres	0.77
Type	Commercial
Sub-Type	Warehouse
Status	Active

Address	239 Pearson Little Avenue
Subdivision	NONE
City	Maidstone
County	Saskatchewan
Province	Saskatchewan
Postal Code	S0M 1M0

Date Listed	July 23rd, 2024
Days on Market	295
Zoning	Commercial

Listing Details

Listing Office

RE/MAX OF LLOYDMINSTER

Data is supplied by Pillar 9â„¢ MLSÂ® System. Pillar 9â„¢ is the owner of the copyright in its MLSÂ® System. Data is deemed reliable but is not guaranteed accurate by Pillar 9â„¢. The trademarks MLSÂ®, Multiple Listing ServiceÂ® and the associated logos are owned by The Canadian Real Estate Association (CREA) and identify the quality of services provided by real estate professionals who are members of CREA. Used under license.